



bellavista™ 1000 select

Trusted versatility

BELLAVISTA™ 1000 SELECT

 **vyaire**™
MEDICAL



An optimal NIV solution

The **bellavista 1000 select** ventilator offers state of the art technology with an innovative & configurable user interface. It is applicable for pediatric to adult patients.

In addition to its essential features, the bellavista select provides expanded monitoring capabilities with alarms for improved patient management. With exceptional leak compensation and trigger algorithms, the bellavista select goes beyond standard non-invasive ventilation (NIV) and supports patients through the continuum of care whether it's NIV, Invasive ventilation or High Flow Oxygen Therapy (HFOT), **all in one device**.

Our customizable software provides practical and unique added value.

Features:

- ICU ventilator with 13.3-inch touchscreen
- Expanded non-invasive functions
- TargetVent
- Data Communication*
- Integrated Pneumatic Nebulizer*
- Lung Mechanics*
- High Flow Oxygen Therapy*
- Minimum four hours battery life

Patient comfort

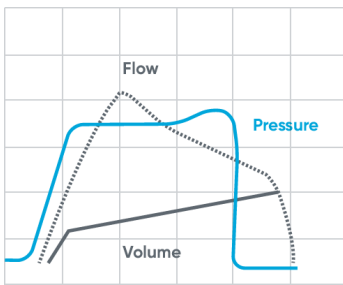
TargetVent

TargetVent, also known as Pressure Regulated Volume Control (PRVC), determines dynamic compliance for each breath and sets the pressure support for the next breath according to the selected target volume. In TargetVent modes, the inspiratory pressure is automatically adjusted from breath to breath in such a way that an adjustable target tidal volume is reached.

Advanced Synchronization Tools

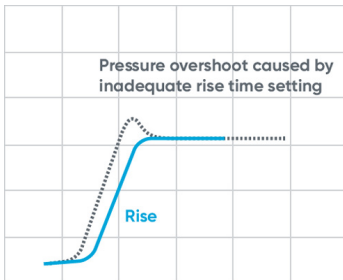
The below synchronization tools are available for invasive and non-invasive ventilation to deliver high fidelity therapy to optimize synchronization with every patient's breathing pattern. It recognizes the patient's expiratory effort immediately, thus helping to reduce the work of breathing and breath-stacking. The inspiratory and expiratory triggers adapt to variable leaks to maintain optimum performance.

Smart software works behind the scenes to deliver auto.sync and auto.rise. These features are designed to work together in support of patient safety and comfort.



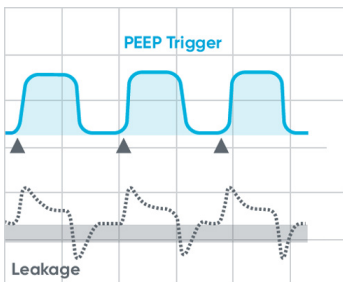
auto.sync

auto.sync releases the patient from a fixed or manual expiratory trigger setting to optimize synchronization during spontaneous breathing. To ensure a smooth transition from inspiration to expiration, auto.sync detects and calculates several criteria with a high sampling rate.



auto.rise

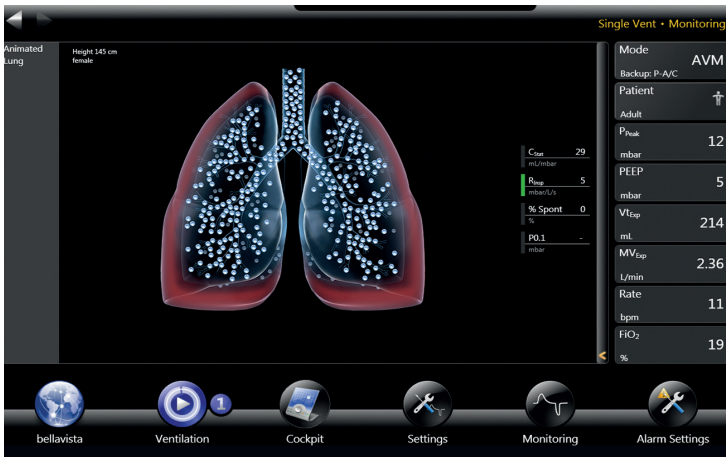
auto.rise adapts and optimizes rise time with a breath-by-breath calculation. It also prevents overshoot to relieve you from the challenge of finding the correct rise time for your patient.



auto.leak

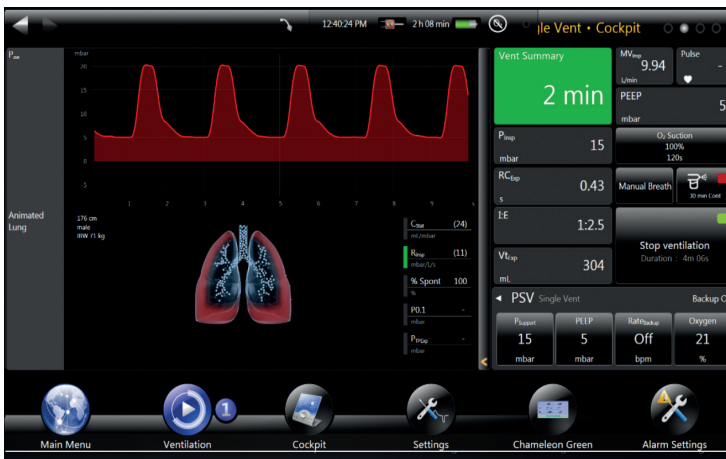
auto.leak, a fully automatic adaptive leak compensation system, reliably compensates for inspiratory and expiratory leaks up to 120 L/min.

Optimizing workflow



AnimatedLung

AnimatedLung is a dynamic tool that visualizes the mechanical state of a patient's lung. An easily comprehensible graphic display helps to detect any changes in lung compliance or resistance, as well as the patient's spontaneous activity.



VentSummary

VentSummary displays an overview of the most relevant weaning criteria, such as spontaneous breathing, PEEP and pressure support. The limits can be individually configured. As soon as the patient's respiratory parameters are within the desired range, VentSummary switches to green and a timer indicates how long the patient maintains the specific extubation criteria.

Accessories

bellavista ventilators offer a wide range of accessories. Please contact your local sales rep to learn more.



Technical specifications

Parameter	Specification
Patient types	Adult, Pediatric, Neonatal*
Areas of application	Intensive care unit (ICU), Neonatal Intensive Care Unit (NICU), Intensive monitoring care (IMC), Emergency room (ER), Intra-hospital transfer
Ventilation modes	
Pressure-controlled	CPAP, P-A/C, PC-SIMV, PSV, beLevel, APRV, S, S/T, T
Volume-controlled	V-A/C, VC-SIMV, PLV (Pressure Limited Ventilation), P-AC _{Target} , PC-SIMV _{Target} , PSV _{Target}
Flow pattern	Square, 50% decelerating, decelerating
Adaptive mode*	AVM
Non-invasive modes	CPAP, PSV, P-A/C, PC-SIMV, beLevel, APRV, P-A/C _{Target} , PC-SIMV _{Target} , PSV _{Target} , nCPAP*, nIPPV*
bellavista modes*	DualVent, DayNight
Apnea ventilation	P-AC, PC-SIMV, V-AC, VC-SIMV
Backup modes	PSV
Oxygen therapy	HFOT 2-50 L/min Adult/Pediatric 1-50 L/min Neonatal*
Features	
Peak inspiratory flow	0-260 L/min
Inspiratory pressure, IPAP	2-60 mbar, 2-100 mbar*
P _{Support}	0-60 mbar, 0 - 100 mbar*
PEEP, EPAP	0-50 mbar
Tidal volume	40-2500 mL Adult/Pediatric; 2-250 mL Neonatal*
Inspiratory time	0.1-10 sec
Respiratory rate	1-100 breaths per minute Adult/Pediatric; 1-150 breaths per minute Neonatal*
I:E ratio	1:99 - 100:1
Inspiratory trigger	Flow 0.1-20 L/min, pressure 0.1-15 mbar, Off
Expiratory trigger	auto.sync, 5-90% manual
Rise time	0-2000 ms, auto.rise
Leak compensation	auto.leak, automatic inspiratory/ expiratory leak compensation

Parameter	Specification
Tube compensation*	ATC, in-expiratory, inspiratory
Graphs	Pressure, Flow, Volume, ATC, SpO ₂ , etCO ₂
Loops*	Pressure/Volume, Pressure/Flow, Flow/Volume, Volumetric CO ₂
Trending	14-day real-time trending*, 1-year parameter trending
Maneuvers	Lung Recruitment Tool*, Manual breath, configurable Sigh*, Hold Inspiration*, Hold Expiration*, NIF* (Negative Inspiration Force), V _{trapped} *, P0.1* (occlusion pressure), Auto-PEEP*
Weaning protocol	VentSummary
Oxygen	21-100 %
Options	AVM, Neonatal Advanced, Volumetric Capnography, SpO ₂ Plethysmography, Lung Recruitment Tool, Esophageal Pressure Monitoring, Dual Vent, Day/Night, Expert Monitoring, Lung Mechanics, Expert Ventilation, Chameleon Modes, Auxiliary Pressure, Data Communication
Nebulizer	Internal, pneumatic
Interfaces	2 × RS 232, Ethernet, 2 × USB, Nurse call, CO ₂ , SpO ₂ , bellavista bus
Additional pressure measurement*	P _{Aux} (internal)
Dimensions (w x h x d)	350 × 220 × 330 mm / 13.78 × 8.66 × 12.99 inch
Screen	13.3" Color Full HD, capacitive glass Touchscreen, TFT
Battery time	minimum 240 min. (internal)
Oxygen supply	0-7 bar, 21.75-101.5 psi, 0-110 L/min
Weight	12.8 kg
Power supply	100-240 VAC / 50-60 Hz, low-voltage input 24 VDC / 3.5 A

*Optional

Dimensions



For more information, please contact your local dealer
or Vyair representative.

GLOBAL HEADQUARTERS

Vyair Medical, Inc.
26125 N. Riverwoods Blvd.
Mettawa, IL 60045
USA

vyair.com

For U.S. distribution only.

2022 Vyair. Vyair, the Vyair Logo and all other trademarks are property of Vyair Medical, Inc. or one of its affiliates.
VYR-US-2200128 1.0

